

Universal Manual Battery Watering Kit



Machines: 24V Models equipped with 2- 12V Trojan® Batteries

This Manual Battery Watering kit is designed exclusively for specific Trojan® brand 12V wet/lead-acid batteries supplied by Tennant. This kit allows for a safer, quicker and easier way to maintain the proper electrolyte levels in your batteries. Kit installation to be performed by Tennant True® service or an authorized Tennant service provider.

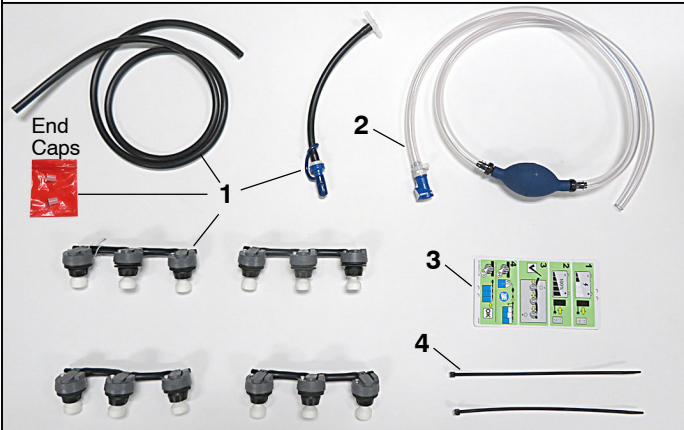
INSTALLATION INSTRUCTIONS:

Installation Time: 1 hour

Special Tools Required: None

Trojan® Battery Types: J305H- AC, J305HG- AC, T- 105, T- 125, T- 1275, T- 145 and T- 605

9021729 - Kit Contents



Item	Part No.	Description	Qty.
1	1257801	Manifold Assy, Water Battery, 12V [Trojan]	1
2	1236295	Pump, Hand, Battery	1
3	1253250	Tag, Battery Watering Instructions	1
4	130773	Tie, Cable, Nyl, 11.0L, 14w, 3.0	2

FOR SAFETY: Before servicing machine, wear personal protection equipment. Avoid contact with battery acid.

1. Park the machine on a level surface, remove key and disconnect battery cables.
2. If needed, neutralize the top of the batteries and the battery compartment of any exposed battery fluid with a mixture of water and baking soda. Remove batteries if necessary.
3. Remove and discard the white battery caps from the Trojan batteries (Figure 1).
4. Install the water valve cap assemblies on batteries. Press each cap until it "clicks" into position (Figure 1). Be careful when inserting valve not to damage float.

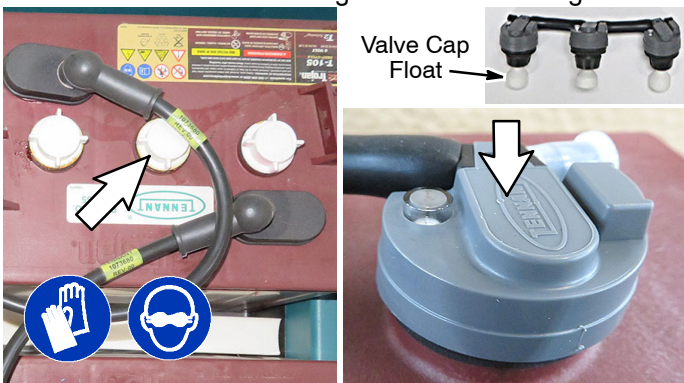


FIG. 1

5. Measure and cut the supplied solution hose to the appropriate lengths and connect the hoses as shown. Before cutting hose, plan for a little hose slack between hose connections. Ensure hose connections are fully seated (Figure 2).

IMPORTANT: Make sure to route the hoses under the battery cables to avoid any risk of the caps becoming unseated or hose kinking.

6. Attach the Instruction tag to the intake hose assembly with cable-ties as shown (Figure 2).

T581 machine battery layout shown

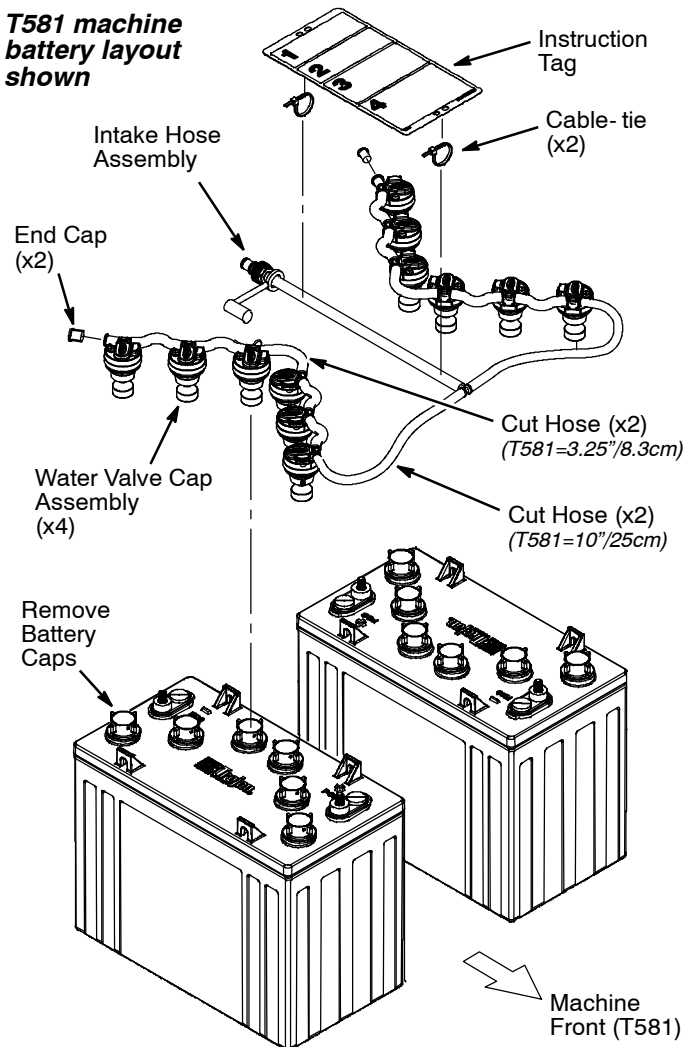
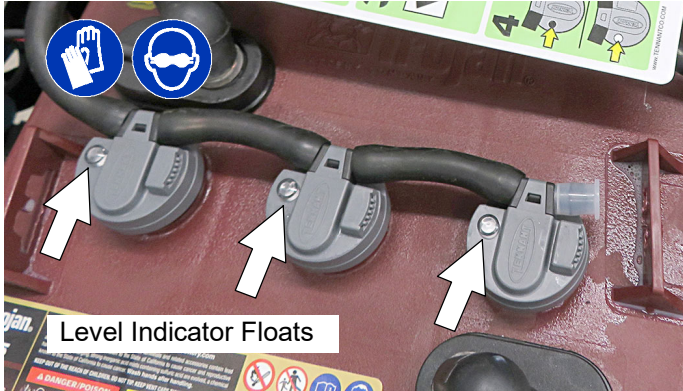


FIG. 2

7. Reconnect battery cables to machine.
8. See page 2 for Operating Instructions.

OPERATING INSTRUCTIONS:

1. Fully charge batteries prior to using the battery watering kit. Do not add water to batteries before charging, the electrolyte level will expand and may overflow when charging.
2. After charging batteries, check the electrolyte level indicator on each battery cap. If any of the indicator floats are low, add water as described in the next step (Figure 3).



Low Float = Add Water

High Float = Full

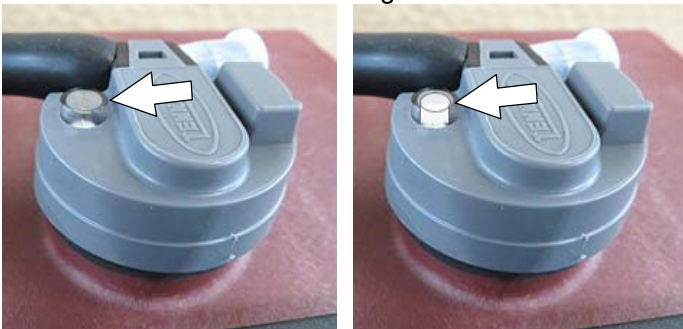


FIG. 3

3. Connect the hand pump hose to the battery watering intake hose (Figure 4).



FIG. 4

4. Submerge the other end of the hand pump hose into a bottle of distilled water (Figure 5).

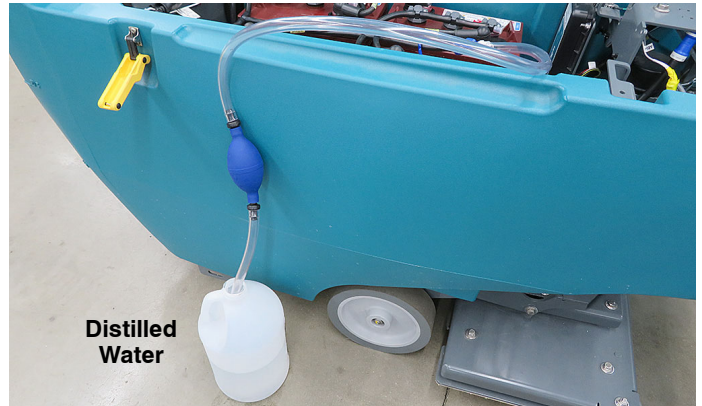


FIG. 5

5. Squeeze the bulb on the hand pump hose until firm. The indicator float will rise when full (Figure 6).

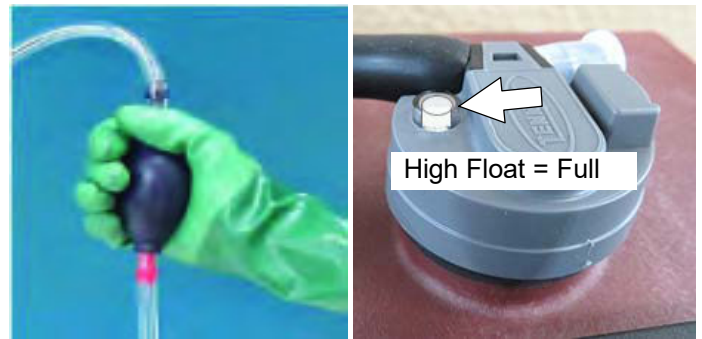


FIG. 6

6. After adding water, replace the dust cap on the intake hose and store the hand pump hose inside the machine's battery compartment for future use.
7. Check the electrolyte level on a weekly basis.
8. Inspect the condition of the battery watering kit on a quarterly basis. Make sure it is in good working condition and all connections are secure and leak free.